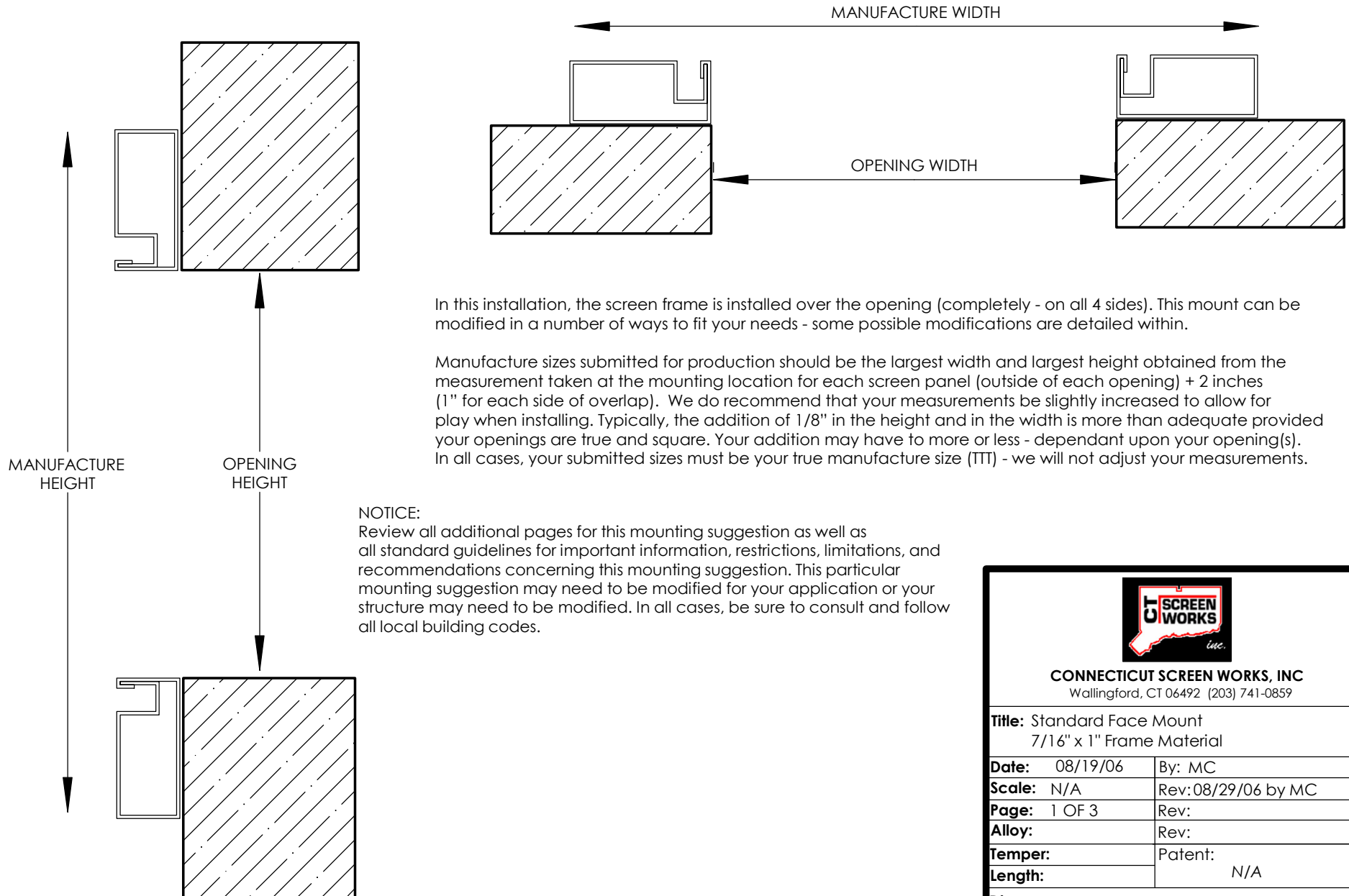


STANDARD FACE MOUNT RECOMMENDED FOR 7/16" x 1" FRAME MATERIALS



In this installation, the screen frame is installed over the opening (completely - on all 4 sides). This mount can be modified in a number of ways to fit your needs - some possible modifications are detailed within.

Manufacture sizes submitted for production should be the largest width and largest height obtained from the measurement taken at the mounting location for each screen panel (outside of each opening) + 2 inches (1" for each side of overlap). We do recommend that your measurements be slightly increased to allow for play when installing. Typically, the addition of 1/8" in the height and in the width is more than adequate provided your openings are true and square. Your addition may have to more or less - dependant upon your opening(s). In all cases, your submitted sizes must be your true manufacture size (TTT) - we will not adjust your measurements.

NOTICE:

Review all additional pages for this mounting suggestion as well as all standard guidelines for important information, restrictions, limitations, and recommendations concerning this mounting suggestion. This particular mounting suggestion may need to be modified for your application or your structure may need to be modified. In all cases, be sure to consult and follow all local building codes.



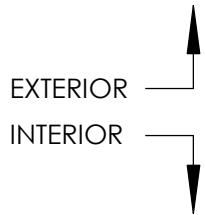
CONNECTICUT SCREEN WORKS, INC
Wallingford, CT 06492 (203) 741-0859

Title: Standard Face Mount
7/16" x 1" Frame Material

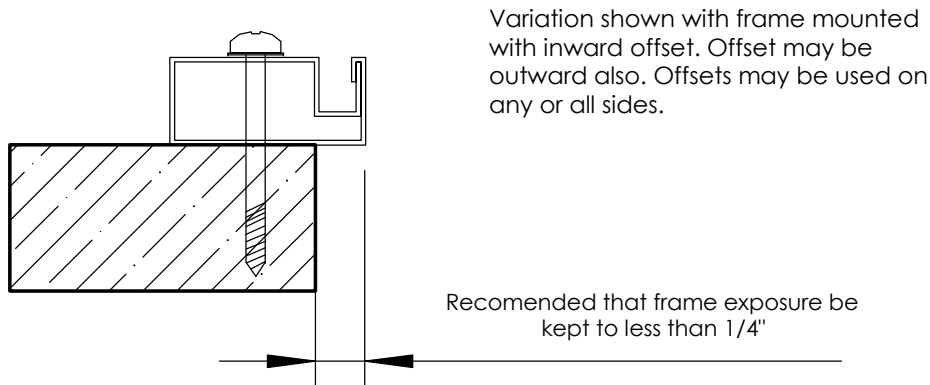
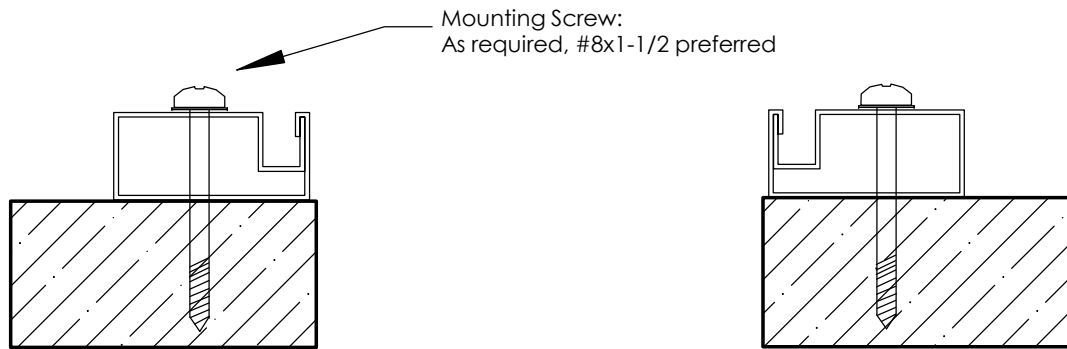
Date: 08/19/06	By: MC
Scale: N/A	Rev: 08/29/06 by MC
Page: 1 OF 3	Rev:
Alloy:	Rev:
Temper:	Patent:
Length:	N/A

Die:

STANDARD FACE MOUNT RECOMMENDED FOR 7/16" x 1" FRAME MATERIALS



TOP DOWN VIEW OF FRAME INSTALLED OVER OPENING



CONNECTICUT SCREEN WORKS, INC
Wallingford, CT 06492 (203) 741-0859

Title: Standard Face Mount
7/16" x 1" Frame Material

Date: 08/19/06	By: MC
Scale: N/A	Rev: 08/29/06 by MC
Page: 2 OF 3	Rev:
Alloy:	Rev:
Temper:	Patent:
Length:	N/A

Die:

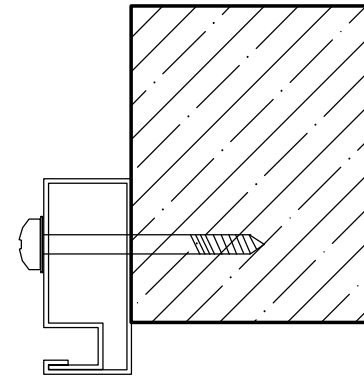
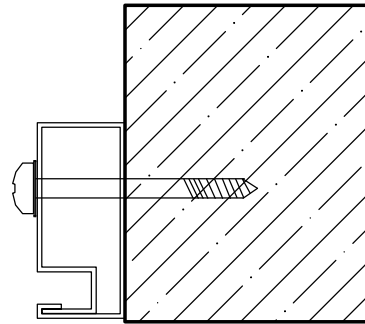
all contents copyright 2006 by CSW, Inc.

STANDARD FACE MOUNT
RECOMMENDED FOR 7/16" x 1" FRAME MATERIALS



SIDE VIEW OF TOP AND BASE FRAME INSTALLATION

Mounting Screw:
As required, #8x1-1/2 preferred

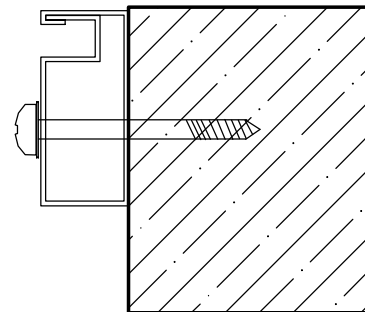



Variation shown with frame mounted with inward offset. Offset may be outward also. Offsets may be used on any or all sides.



Recommended that frame exposure be kept to less than 1/4"

Mounting Screw:
As required, #8x1-1/2 preferred





CONNECTICUT SCREEN WORKS, INC
Wallingford, CT 06492 (203) 741-0859

Title: Standard Face Mount 7/16" x 1" Frame Material	
Date: 08/19/06	By: MC
Scale: N/A	Rev: 08/29/06 by MC
Page: 3 OF 3	Rev:
Alloy:	Rev:
Temper:	Patent:
Length:	N/A
Die:	
all contents copyright 2006 by CSW, Inc.	