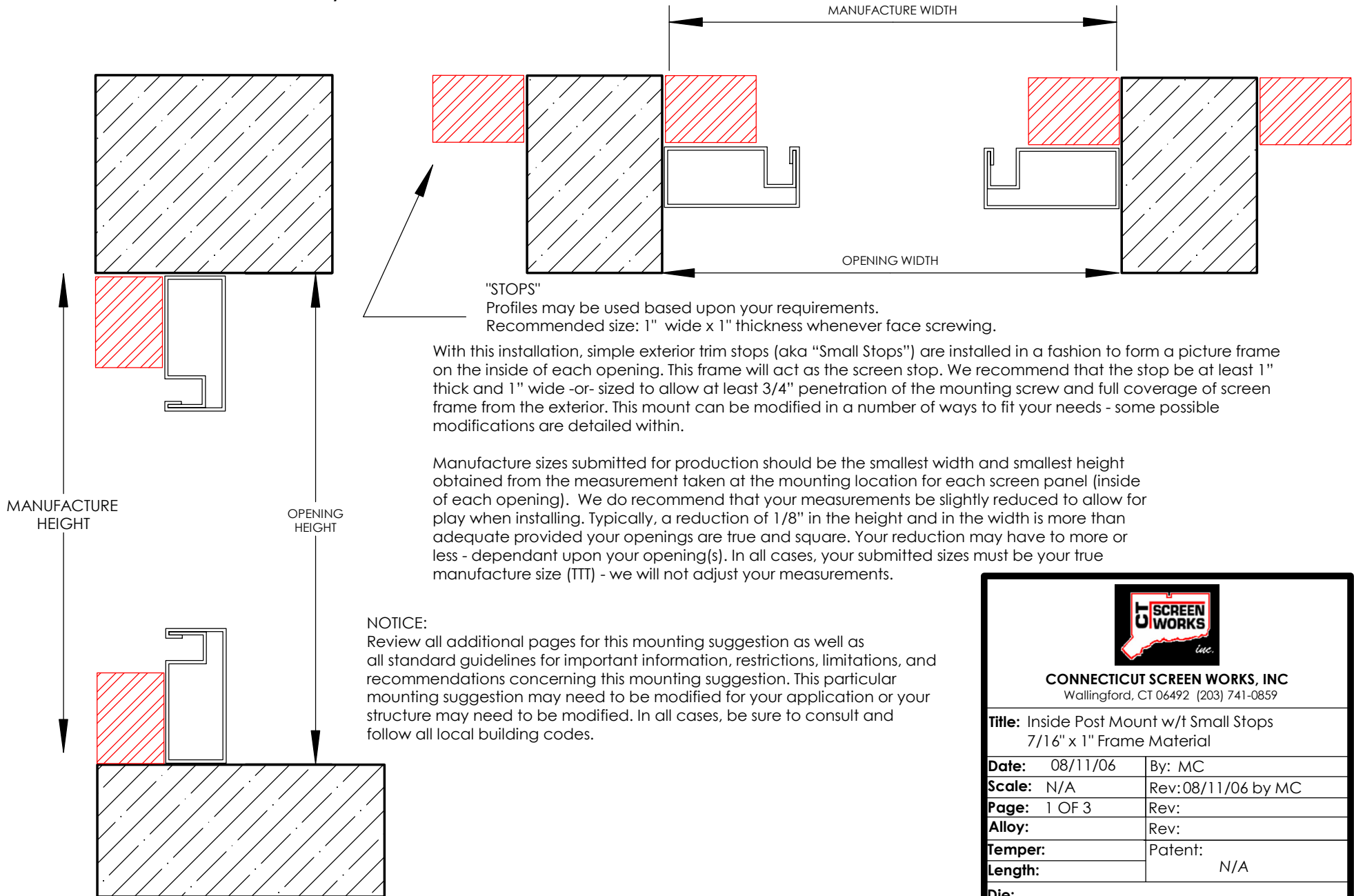



# INSIDE POST WITH SMALL STOPS RECOMMENDED FOR 7/16" x 1" FRAME MATERIALS



With this installation, simple exterior trim stops (aka "Small Stops") are installed in a fashion to form a picture frame on the inside of each opening. This frame will act as the screen stop. We recommend that the stop be at least 1" thick and 1" wide -or- sized to allow at least 3/4" penetration of the mounting screw and full coverage of screen frame from the exterior. This mount can be modified in a number of ways to fit your needs - some possible modifications are detailed within.

Manufacture sizes submitted for production should be the smallest width and smallest height obtained from the measurement taken at the mounting location for each screen panel (inside of each opening). We do recommend that your measurements be slightly reduced to allow for play when installing. Typically, a reduction of 1/8" in the height and in the width is more than adequate provided your openings are true and square. Your reduction may have to more or less - dependant upon your opening(s). In all cases, your submitted sizes must be your true manufacture size (TTT) - we will not adjust your measurements.

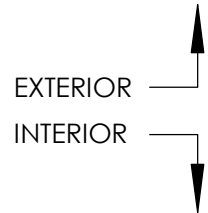
**NOTICE:**  
Review all additional pages for this mounting suggestion as well as all standard guidelines for important information, restrictions, limitations, and recommendations concerning this mounting suggestion. This particular mounting suggestion may need to be modified for your application or your structure may need to be modified. In all cases, be sure to consult and follow all local building codes.



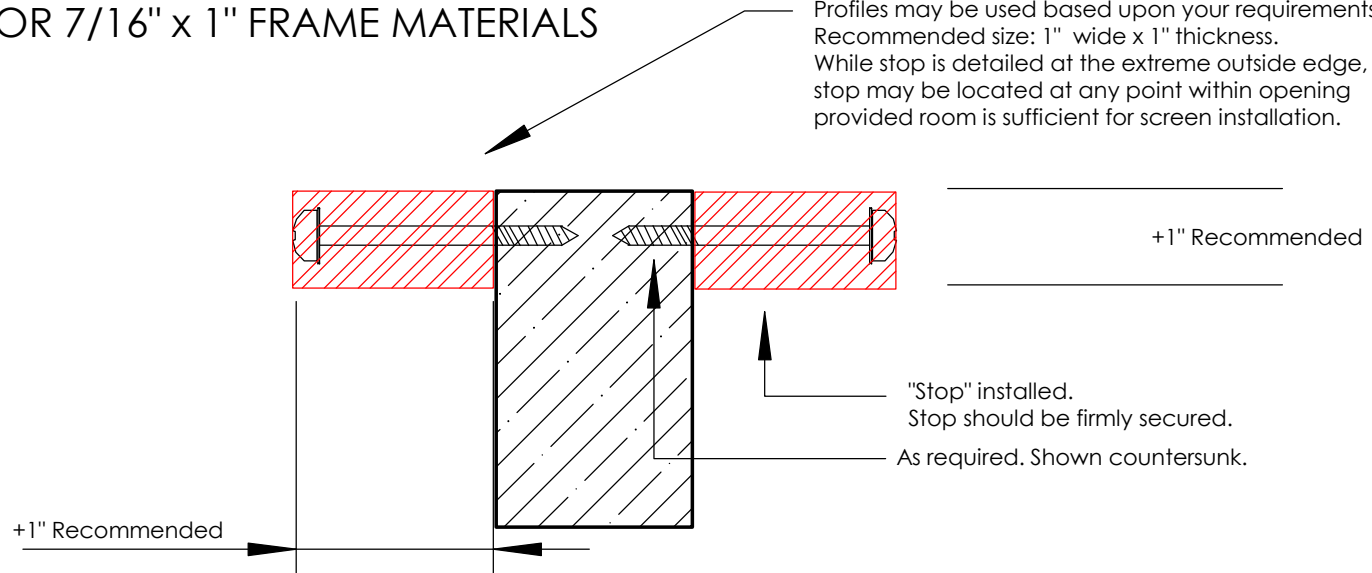
**CONNECTICUT SCREEN WORKS, INC**  
Wallingford, CT 06492 (203) 741-0859

<b>Title:</b> Inside Post Mount w/t Small Stops 7/16" x 1" Frame Material	
<b>Date:</b> 08/11/06	<b>By:</b> MC
<b>Scale:</b> N/A	<b>Rev:</b> 08/11/06 by MC
<b>Page:</b> 1 OF 3	<b>Rev:</b>
<b>Alloy:</b>	<b>Rev:</b>
<b>Temper:</b>	<b>Patent:</b>
<b>Length:</b>	N/A
<b>Die:</b>	
all contents copyright 2006 by CSW, Inc.	

# INSIDE POST WITH SMALL STOPS RECOMMENDED FOR 7/16" x 1" FRAME MATERIALS



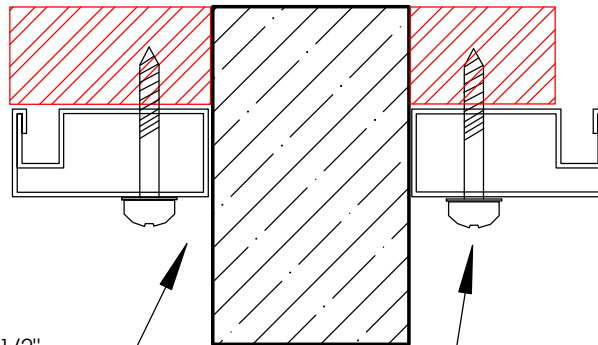
"STOPS"  
Profiles may be used based upon your requirements.  
Recommended size: 1" wide x 1" thickness.  
While stop is detailed at the extreme outside edge,  
stop may be located at any point within opening  
provided room is sufficient for screen installation.



Note: Stop may cover as much or as little of the frame material as desired.  
It is recommended that stop be sized wide enough to hide screen frame.


Shown with frame fully hidden by stop

Gap between post and frame will vary based upon preplanning.  
Maximum recommended space is 1/2" .



Shown with frame partially revealed due to smaller stop

Mounting Screw:  
#8x1-1/2" preferred



**CONNECTICUT SCREEN WORKS, INC**  
Wallingford, CT 06492 (203) 741-0859

**Title:** Inside Post Mount w/t Small Stops  
7/16" x 1" Frame Material

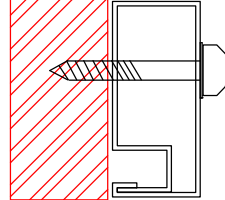
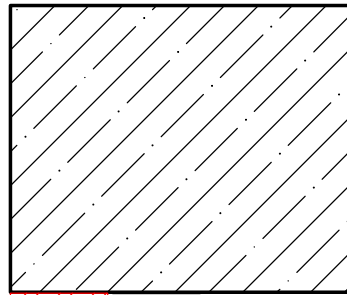
<b>Date:</b> 08/11/06	<b>By:</b> MC
<b>Scale:</b> N/A	<b>Rev:</b> 08/11/06 by MC
<b>Page:</b> 2 OF 3	<b>Rev:</b>
<b>Alloy:</b>	<b>Rev:</b>
<b>Temper:</b>	<b>Patent:</b>
<b>Length:</b>	N/A
<b>Die:</b>	

all contents copyright 2006 by CSW, Inc.

INSIDE POST WITH SMALL STOPS  
 RECOMMENDED FOR 7/16" x 1" FRAME MATERIALS



SIDE VIEW OF TOP AND BASE FRAME INSTALLATION

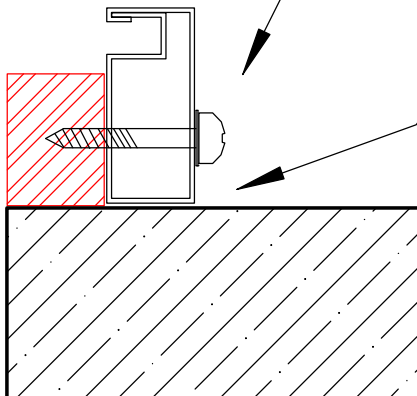


Gap between post and frame will vary based upon preplanning. Maximum recommended space is 1/2" .

Mounting Screw:  
 #8x1-1/2" preferred

Shown with frame fully hidden by stop

Note: Stop may cover as much or as little of the frame material as desired. It is recommended that stop be sized wide enough to hide screen frame.



Gap between post and frame will vary based upon preplanning. Maximum recommended space is 1/2" .

Shown with frame partially revealed due to smaller stop



**CONNECTICUT SCREEN WORKS, INC**  
 Wallingford, CT 06492 (203) 741-0859

**Title:** Inside Post Mount w/t Small Stops  
 7/16" x 1" Frame Material

<b>Date:</b> 08/11/06	<b>By:</b> MC
<b>Scale:</b> N/A	<b>Rev:</b> 08/11/06 by MC
<b>Page:</b> 3 OF 3	<b>Rev:</b>
<b>Alloy:</b>	<b>Rev:</b>
<b>Temper:</b>	<b>Patent:</b>
<b>Length:</b>	N/A

**Die:**