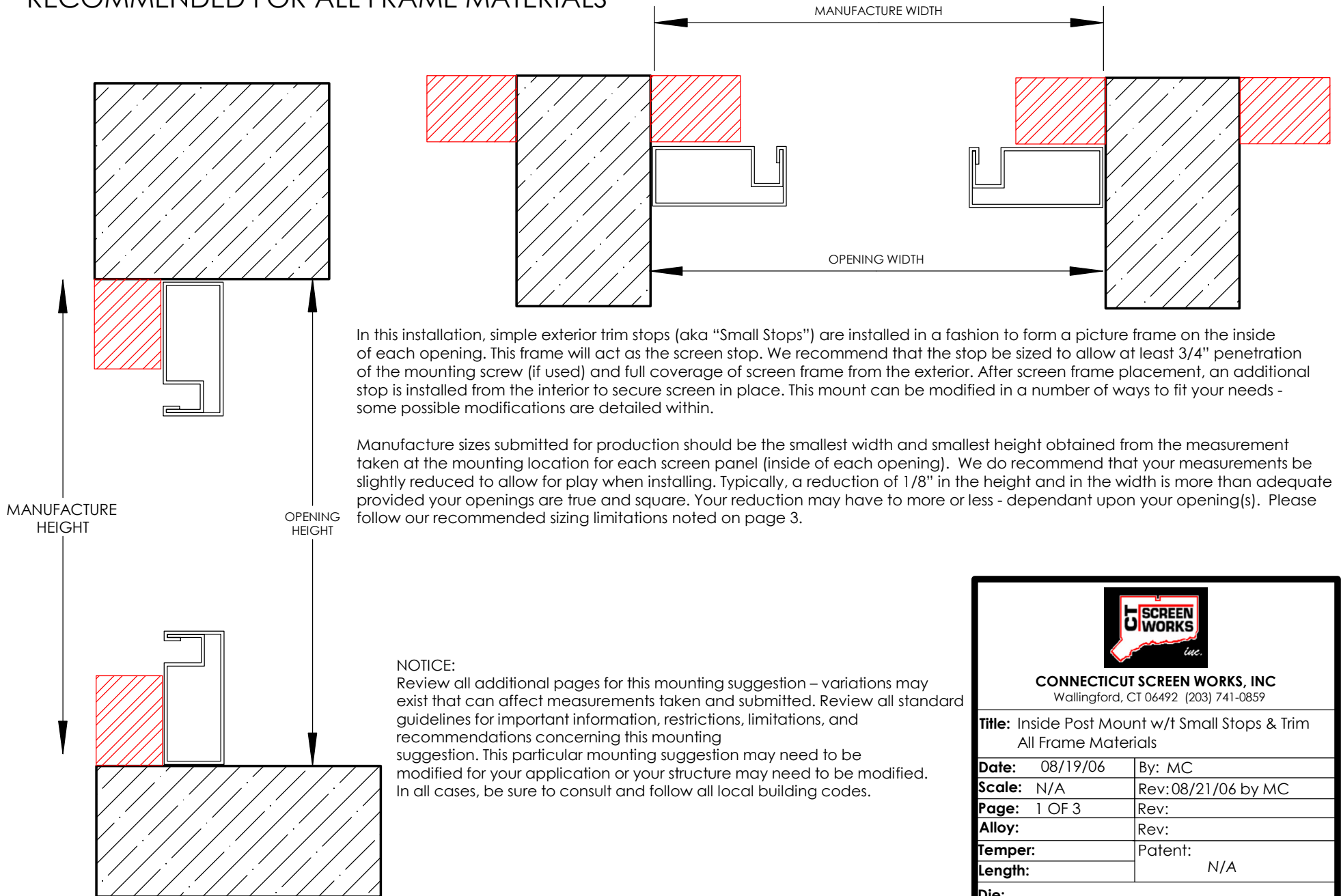



# INSIDE POST WITH SMALL STOPS AND TRIM RECOMMENDED FOR ALL FRAME MATERIALS



In this installation, simple exterior trim stops (aka "Small Stops") are installed in a fashion to form a picture frame on the inside of each opening. This frame will act as the screen stop. We recommend that the stop be sized to allow at least 3/4" penetration of the mounting screw (if used) and full coverage of screen frame from the exterior. After screen frame placement, an additional stop is installed from the interior to secure screen in place. This mount can be modified in a number of ways to fit your needs - some possible modifications are detailed within.

Manufacture sizes submitted for production should be the smallest width and smallest height obtained from the measurement taken at the mounting location for each screen panel (inside of each opening). We do recommend that your measurements be slightly reduced to allow for play when installing. Typically, a reduction of 1/8" in the height and in the width is more than adequate provided your openings are true and square. Your reduction may have to more or less - dependant upon your opening(s). Please follow our recommended sizing limitations noted on page 3.

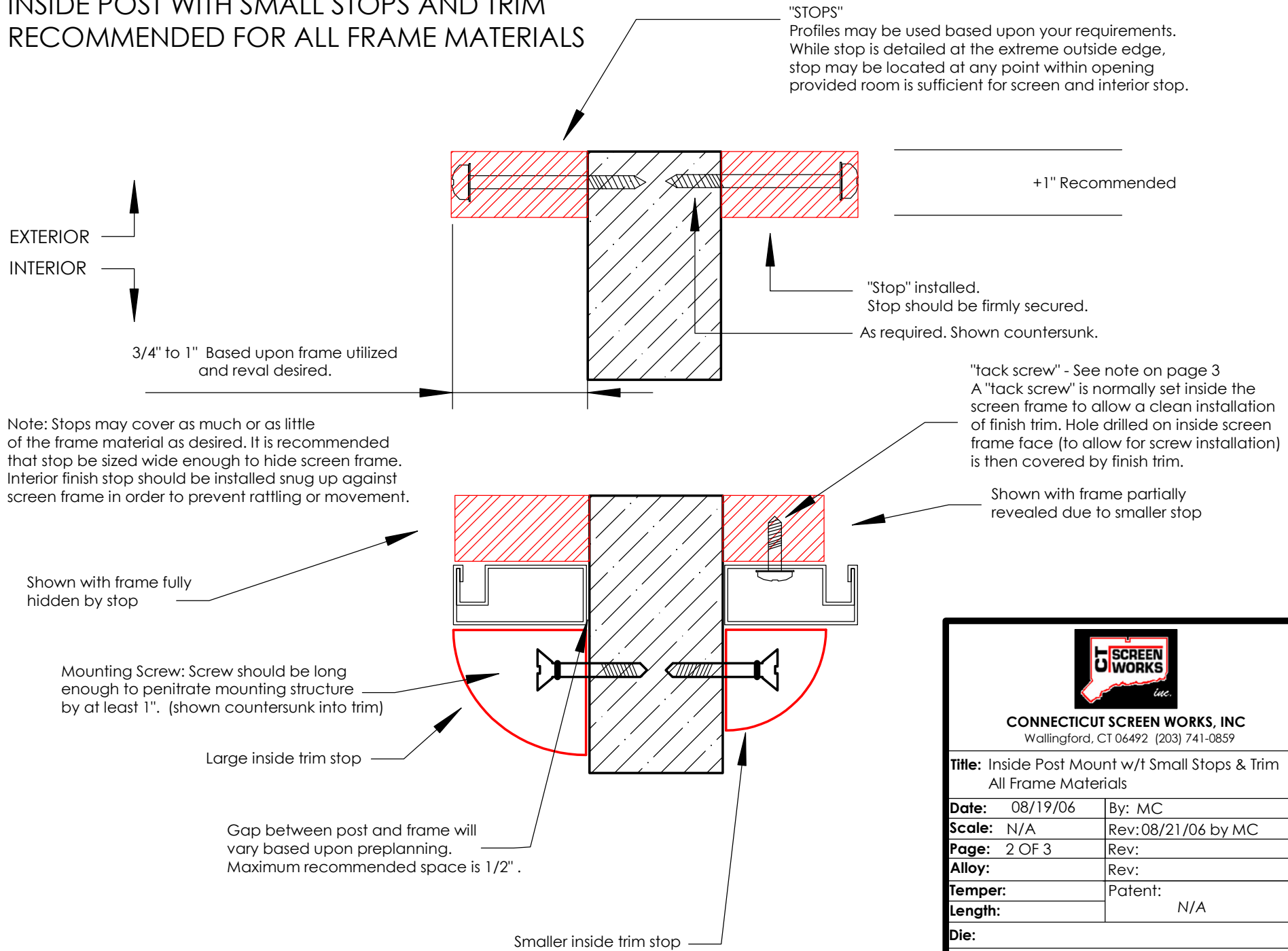
**NOTICE:**  
Review all additional pages for this mounting suggestion – variations may exist that can affect measurements taken and submitted. Review all standard guidelines for important information, restrictions, limitations, and recommendations concerning this mounting suggestion. This particular mounting suggestion may need to be modified for your application or your structure may need to be modified. In all cases, be sure to consult and follow all local building codes.



**CONNECTICUT SCREEN WORKS, INC**  
Wallingford, CT 06492 (203) 741-0859

<b>Title:</b> Inside Post Mount w/t Small Stops & Trim All Frame Materials	
<b>Date:</b> 08/19/06	<b>By:</b> MC
<b>Scale:</b> N/A	<b>Rev:</b> 08/21/06 by MC
<b>Page:</b> 1 OF 3	<b>Rev:</b>
<b>Alloy:</b>	<b>Rev:</b>
<b>Temper:</b>	<b>Patent:</b>
<b>Length:</b>	N/A
<b>Die:</b>	
all contents copyright 2006 by CSW, Inc.	

# INSIDE POST WITH SMALL STOPS AND TRIM RECOMMENDED FOR ALL FRAME MATERIALS



**CONNECTICUT SCREEN WORKS, INC**  
Wallingford, CT 06492 (203) 741-0859

**Title:** Inside Post Mount w/t Small Stops & Trim  
All Frame Materials

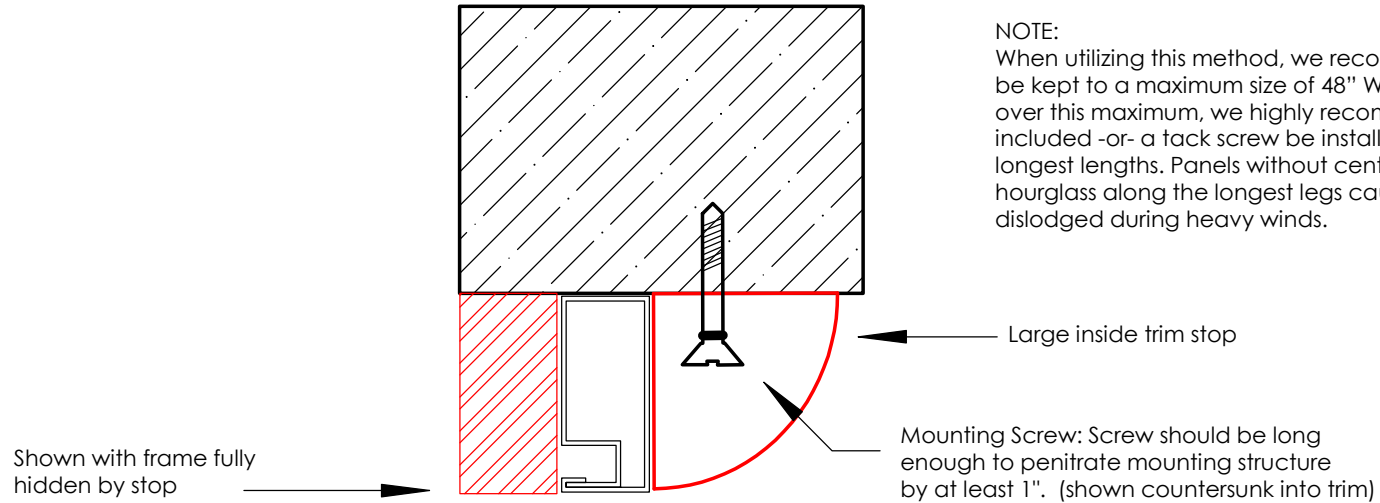
<b>Date:</b> 08/19/06	<b>By:</b> MC
<b>Scale:</b> N/A	<b>Rev:</b> 08/21/06 by MC
<b>Page:</b> 2 OF 3	<b>Rev:</b>
<b>Alloy:</b>	<b>Rev:</b>
<b>Temper:</b>	<b>Patent:</b>
<b>Length:</b>	N/A

**Die:**

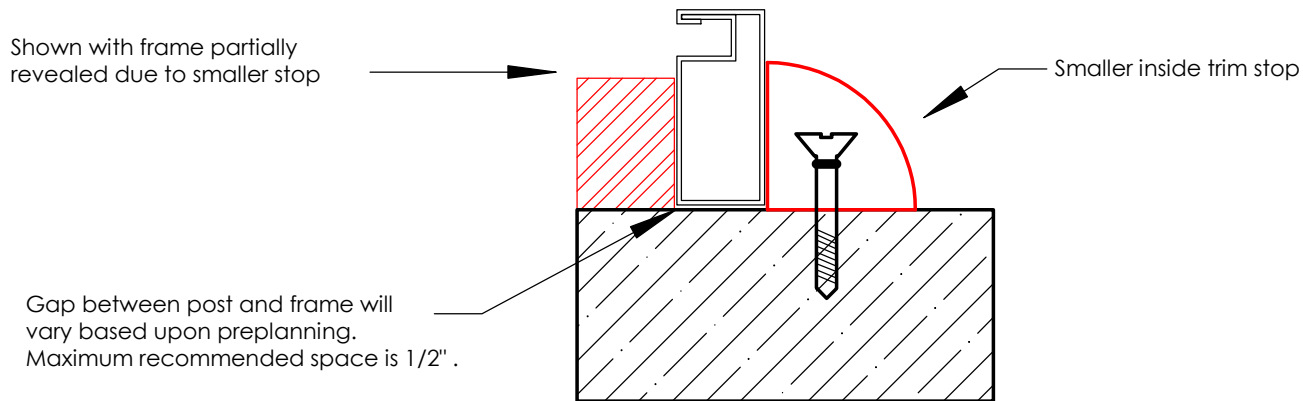
# INSIDE POST WITH SMALL STOPS AND TRIM RECOMMENDED FOR ALL FRAME MATERIALS



## SIDE VIEW OF TOP AND BASE FRAME INSTALLATION



Note: Stops may cover as much or as little of the frame material as desired. It is recommended that stop be sized wide enough to hide screen frame. Interior finish stop should be installed snug up against screen frame in order to prevent rattling or movement.



**CONNECTICUT SCREEN WORKS, INC**  
Wallingford, CT 06492 (203) 741-0859

**Title:** Inside Post Mount w/t Small Stops & Trim  
All Frame Materials

<b>Date:</b> 08/19/06	<b>By:</b> MC
<b>Scale:</b> N/A	<b>Rev:</b> 08/21/06 by MC
<b>Page:</b> 3 OF 3	<b>Rev:</b>
<b>Alloy:</b>	<b>Rev:</b>
<b>Temper:</b>	<b>Patent:</b>
<b>Length:</b>	N/A

**Die:**

all contents copyright 2006 by CSW, Inc.